

CATALOGUE NO. 8741.1

EMBARGOED UNTIL 11.30 A.M. 7 SEPTEMBER 1995

**DWELLING UNIT COMMENCEMENTS REPORTED BY APPROVING AUTHORITIES,
NEW SOUTH WALES, MAY 1995**

NOTE: There was a break in series from November 1990. For more information, see paragraph 2 of the Explanatory Notes.

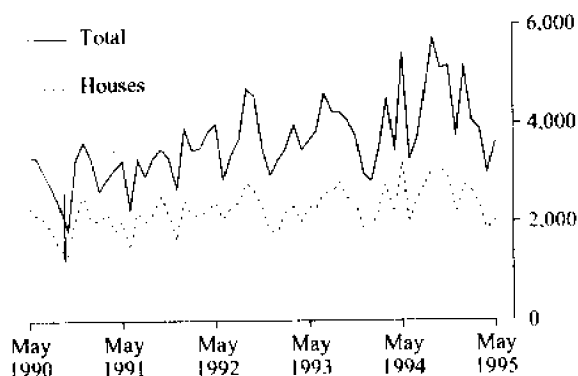
MAIN FEATURES

The total number of dwelling units commenced in New South Wales in May 1995 (3,573) was 19% higher than in the previous month (3,015) and 34% lower than in May 1994 (5,422).

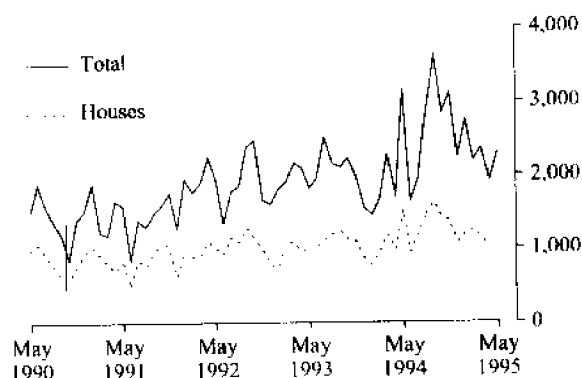
The number of houses commenced in New South Wales in May 1995 (2,046) was 12% higher than in the previous month (1,829) while for Sydney Statistical Division there was a decrease of 2% (from 1,012 to 994).

The number of dwelling units commenced in New South Wales for the 11 months to May 1995 (47,907) was 10% higher than for the corresponding period in the previous financial year.

DWELLINGS COMMENCED IN NSW



DWELLINGS COMMENCED IN SYDNEY



Indicates a break in series.

INQUIRIES

- for further information about statistics in this publication and the availability of related unpublished statistics, contact Peter Samson on (02) 268 4176.
- for information about other ABS statistics and services please refer to the back of this publication.

NOTES

The statistics on dwelling unit commencements are compiled from data supplied in monthly reports provided by local and other government authorities. The statistics relate to the number of new dwelling units reported as commencements of new houses and new other residential buildings.

Explanatory notes are provided at the back of this publication.

GREG BRAY
Deputy Commonwealth Statistician

Unpublished data

The ABS can make available certain dwelling commencements data which are not published, such as floor area, type of other residential building, material of roof and floor, sub-LGA level data and value ranges. Where it is not practicable to provide the required information by telephone, data can be provided in the following forms:

- Photocopy
- Microfiche
- Computer printout or floppy disk
- Computer generated maps displaying dwellings commenced data
- Clerically extracted tabulation

A charge may be made for providing unpublished information in these forms.

For further details please telephone Peter Samson on (02) 268 4176.

TABLE 1. DWELLING UNITS COMMENCED, NSW
(Number of dwelling units)

Period	Private sector			Public sector			Total		
	Houses	Other residential buildings	Total	Houses	Other residential buildings	Total	Houses	Other residential buildings	Total
1992-93	26,439	14,671	41,110	739	2,700	3,439	27,178	17,371	44,549
1993-94	28,427	15,861	44,288	763	1,832	2,595	29,190	17,693	46,883
<i>July-May—</i>									
1993-94	26,430	14,722	41,152	725	1,725	2,450	27,155	16,447	43,602
1994-95	27,835	18,670	46,505	390	1,012	1,402	28,225	19,682	47,907
<i>1994—</i>									
May	3,141	2,060	5,201	75	146	221	3,216	2,206	5,422
June	1,997	1,139	3,136	38	107	145	2,035	1,246	3,281
July	2,379	1,070	3,449	63	188	251	2,442	1,258	3,700
August	2,778	1,829	4,607	33	56	89	2,811	1,885	4,696
September	3,067	2,487	5,554	48	128	176	3,115	2,615	5,730
October	3,084	1,968	5,052	32	38	70	3,116	2,006	5,122
November	2,860	2,145	5,005	52	120	172	2,912	2,265	5,177
December	2,188	1,494	3,682	27	87	114	2,215	1,581	3,796
<i>1995</i>									
January	2,736	2,206	4,942	21	171	192	2,757	2,377	5,134
February	2,614	1,345	3,959	19	65	84	2,633	1,410	4,043
March	2,305	1,453	3,758	44	119	163	2,349	1,572	3,921
April	1,790	1,150	2,940	39	36	75	1,829	1,186	3,015
May	2,034	1,523	3,557	12	4	16	2,046	1,527	3,573

TABLE 2. DWELLING UNITS COMMENCED IN SELECTED STATISTICAL DIVISIONS
(Number of dwelling units)

Period	Private sector			Public sector			Total		
	Houses	Other residential buildings	Total	Houses	Other residential buildings	Total	Houses	Other residential buildings	Total
SYDNEY STATISTICAL DIVISION									
1992-93	11,919	9,464	21,383	382	1,758	2,140	12,301	11,222	23,523
1993-94	12,622	10,295	22,917	355	1,198	1,553	12,977	11,493	24,470
<i>1994</i>									
May	1,472	1,574	3,046	38	78	116	1,510	1,652	3,162
June	924	668	1,592	16	44	60	940	712	1,652
July	1,159	648	1,807	42	82	124	1,201	730	1,931
August	1,443	1,359	2,802	24	34	58	1,467	1,393	2,860
September	1,592	1,881	3,473	39	106	145	1,631	1,987	3,618
October	1,384	1,415	2,799	21	30	51	1,405	1,445	2,850
November	1,347	1,680	3,027	26	59	85	1,373	1,739	3,112
December	1,048	1,141	2,189	24	50	74	1,072	1,191	2,263
<i>1995—</i>									
January	1,200	1,445	2,645	11	84	95	1,211	1,529	2,740
February	1,241	936	2,177	14	10	24	1,255	946	2,201
March	1,110	1,113	2,223	30	113	143	1,140	1,226	2,366
April	990	882	1,872	22	34	56	1,012	916	1,928
May	985	1,258	2,243	9	—	9	994	1,258	2,252

TABLE 2. DWELLING UNITS COMMENCED IN SELECTED STATISTICAL DIVISIONS *continued*
(Number of dwelling units)

Period	Private sector			Public sector			Total		
	Houses	Other residential buildings	Total	Houses	Other residential buildings	Total	Houses	Other residential buildings	Total
HUNTER STATISTICAL DIVISION									
1992-93	3,214	1,594	4,808	69	199	268	3,283	1,793	5,076
1993-94	3,812	1,889	5,701	116	109	225	3,928	1,998	5,926
<i>1994 -</i>									
May	350	161	511	10	10	20	360	171	531
June	262	219	481	2	5	7	264	224	488
July	262	124	386	1	62	63	263	186	449
August	278	115	393	2	22	24	280	137	417
September	285	138	423	2	22	24	287	160	447
October	518	133	651	2	8	10	520	141	661
November	378	146	524	11	39	50	389	185	574
December	290	107	397				290	107	397
<i>1995 -</i>									
January	400	372	772				400	372	772
February	356	121	477	2	47	49	358	168	526
March	267	124	391	3	--	3	270	124	394
April	150	49	199	13	2	15	163	51	214
May	200	35	235	1		1	201	35	236
ILLAWARRA STATISTICAL DIVISION									
1992-93	2,310	939	3,249	26	246	272	2,336	1,185	3,521
1993-94	2,319	801	3,120	65	135	200	2,384	936	3,320
<i>1994 -</i>									
May	264	64	328	3	--	3	267	64	331
June	140	33	173	1	40	41	141	73	214
July	237	94	331	2	--	2	239	94	333
August	249	105	354	--	--	--	249	105	354
September	257	77	334	--	--	--	257	77	334
October	324	199	523				324	199	523
November	366	102	468	--	--	--	366	102	468
December	254	93	347	--	35	35	254	128	382
<i>1995 -</i>									
January	260	143	403		3	3	260	146	406
February	233	36	269	--	--	--	233	36	269
March	286	76	362	3	2	5	289	78	367
April	138	44	182	--	--	--	138	44	182
May	135	42	177	--	--	--	135	42	177
BALANCE OF NEW SOUTH WALES									
1992-93	8,996	2,674	11,670	262	497	759	9,258	3,171	12,429
1993-94	9,674	2,876	12,550	227	390	617	9,901	3,266	13,167
<i>1994 -</i>									
May	1,055	261	1,316	24	58	82	1,079	319	1,398
June	671	219	890	19	18	37	690	237	927
July	721	204	925	18	44	62	739	248	987
August	808	250	1,058	7	--	7	815	250	1,065
September	933	391	1,324	7	--	7	940	391	1,331
October	858	221	1,079	9	--	9	867	221	1,088
November	769	217	986	15	22	37	784	239	1,023
December	596	153	749	3	2	5	599	155	754
<i>1995 -</i>									
January	876	246	1,122	10	84	94	886	330	1,216
February	784	252	1,036	3	8	11	787	260	1,047
March	642	140	782	8	4	12	650	144	794
April	512	175	687	4		4	516	175	691
May	714	188	902	2	4	6	716	192	908

TABLE 3. HOUSES COMMENCED, BY MATERIAL OF OUTER WALLS, NSW

Period	Double brick (a)	Brick veneer	Fibre cement	Timber	Other and not stated	Total
PRIVATE SECTOR						
1992-93	3,203	19,857	1,133	1,763	483	26,439
1993-94	3,797	21,003	1,067	1,857	703	28,427
<i>1994-</i>						
May	430	2,391	97	174	49	3,141
June	258	1,537	66	115	21	1,997
July	287	1,852	85	131	24	2,379
August	324	2,160	68	163	63	2,778
September	347	2,324	110	189	97	3,067
October	366	2,304	118	185	111	3,084
November	357	2,146	93	190	74	2,860
December	322	1,571	89	149	57	2,188
<i>1995-</i>						
January	323	2,090	107	138	78	2,736
February	367	1,983	79	126	59	2,614
March	327	1,729	72	131	46	2,305
April	279	1,283	72	113	43	1,790
May	337	1,447	71	135	44	2,034
PUBLIC SECTOR						
1992-93	67	658	9	2	3	739
1993-94	87	648	1	5	22	763
<i>1994</i>						
May	2	73	—	—	—	75
June	4	31	—	3	—	38
July	2	59	—	2	—	63
August	6	27	—	—	—	33
September	5	42	1	—	—	48
October	1	23	1	—	7	32
November	4	48	—	—	—	52
December	3	24	—	—	—	27
<i>1995 -</i>						
January	4	15	—	—	2	21
February	2	17	—	—	—	19
March	2	42	—	—	—	44
April	—	39	—	—	—	39
May	1	11	—	—	—	12
TOTAL						
1992-93	3,270	20,515	1,142	1,765	486	27,178
1993-94	3,884	21,651	1,068	1,862	725	29,190
<i>1994 -</i>						
May	432	2,464	97	174	49	3,216
June	262	1,568	66	118	21	2,035
July	289	1,911	85	133	24	2,442
August	330	2,187	68	163	63	2,811
September	352	2,366	111	189	97	3,115
October	367	2,327	119	185	118	3,116
November	361	2,194	93	190	74	2,912
December	325	1,595	89	149	57	2,215
<i>1995</i>						
January	327	2,105	107	138	80	2,757
February	369	2,000	79	126	59	2,633
March	329	1,771	72	131	46	2,349
April	279	1,322	72	113	43	1,829
May	338	1,458	71	135	44	2,046

(a) Includes house constructed with outer walls of stone or concrete.

TABLE 4. HOUSES COMMENCED IN STATISTICAL DIVISIONS

Statistical division	April 1995					Total	May 1995					Total
	Double brick (a)	Brick veneer	Fibre cement	Timber	Other and not stated		Double brick (a)	Brick veneer	Fibre cement	Timber	Other and not stated	
PRIVATE SECTOR												
Sydney	156	754	14	41	25	990	162	744	7	48	24	985
Hunter	18	108	11	11	2	150	32	153	4	11	—	200
Illawarra	7	122	2	5	2	138	5	111	3	14	2	135
Richmond-Tweed	13	97	—	13	—	123	9	90	3	9	3	114
Mid-North Coast	15	61	4	16	2	98	20	140	19	19	2	200
Northern	8	13	5	3	1	30	14	21	4	2	—	41
North Western	4	13	3	2	—	22	10	42	6	3	5	66
Central West	22	31	7	1	1	62	34	39	10	2	1	86
South Eastern	20	35	21	11	7	94	24	50	9	22	4	109
Murrumbidgee	5	14	4	5	3	31	11	20	3	2	1	37
Murray	11	34	1	5	—	51	16	37	3	2	2	60
Far West	—	1	—	—	—	1	—	—	2	1	—	3
New South Wales	279	1,283	72	113	43	1,790	337	1,447	73	135	44	2,036
PUBLIC SECTOR												
Sydney	—	22	—	—	—	22	—	9	—	—	—	9
Hunter	—	13	—	—	—	13	—	1	—	—	—	1
Illawarra	—	—	—	—	—	—	—	—	—	—	—	—
Richmond-Tweed	—	—	—	—	—	—	—	—	—	—	—	—
Mid-North Coast	—	—	—	—	—	—	—	1	—	—	—	1
Northern	—	3	—	—	—	3	—	—	—	—	—	—
North Western	—	—	—	—	—	—	—	—	—	—	—	—
Central West	—	—	—	—	—	—	1	—	—	—	—	1
South Eastern	—	—	—	—	—	—	—	—	—	—	—	—
Murrumbidgee	—	—	—	—	—	—	—	—	—	—	—	—
Murray	—	1	—	—	—	1	—	—	—	—	—	—
Far West	—	—	—	—	—	—	—	—	—	—	—	—
New South Wales	—	39	—	—	—	39	1	11	—	—	—	12
TOTAL												
Sydney	156	776	14	41	25	1,012	162	753	7	48	24	994
Hunter	18	121	11	11	2	163	32	154	4	11	—	201
Illawarra	7	122	2	5	2	138	5	111	3	14	2	135
Richmond-Tweed	13	97	—	13	—	123	9	90	3	9	3	114
Mid-North Coast	15	61	4	16	2	98	20	141	19	19	2	201
Northern	8	16	5	3	1	33	14	21	4	2	—	41
North Western	4	13	3	2	—	22	10	42	6	3	5	66
Central West	22	31	7	1	1	62	35	39	10	2	1	87
South Eastern	20	35	21	11	7	94	24	50	9	22	4	109
Murrumbidgee	5	14	4	5	3	31	11	20	3	2	1	37
Murray	11	35	1	5	—	52	16	37	3	2	2	60
Far West	—	1	—	—	—	1	—	—	2	1	—	3
New South Wales	279	1,322	72	113	43	1,829	338	1,458	73	135	44	2,048

(a) Includes houses constructed with outer walls of stone or concrete.

**TABLE 5. NEW DWELLING UNITS COMMENCED IN OTHER RESIDENTIAL BUILDINGS, BY TYPE IN STATISTICAL DIVISIONS
MAY 1995**

Statistical division	Semi-detached, row or terrace houses, townhouses, etc. of			Flats, units or apartments in a building of			Unknown or not stated	Total	
	1 storey	2 or more storeys	Total	1-2 storeys	3 storeys	4 or more storeys			Total
NUMBER									
Sydney	306	226	532	144	112	470	726	—	1,258
Hunter	31	4	35	—	—	—	—	—	35
Illawarra	26	16	42	—	—	—	—	—	42
Richmond Tweed	22	6	28	34	—	—	34	—	62
Mid-North Coast	17	15	32	20	—	—	20	—	52
Northern	10	—	10	—	—	—	—	—	10
North Western	8	—	8	—	—	—	—	—	8
Central West	12	—	12	—	—	—	—	—	12
South Eastern	12	2	14	6	—	—	6	—	20
Murrumbidgee	2	—	2	16	—	—	16	—	18
Murray	6	—	6	4	—	—	4	—	10
Far West	—	—	—	—	—	—	—	—	—
New South Wales	452	269	721	224	112	470	806	—	1,527
VALUE (\$'000)									
Sydney	22,050	22,224	44,275	10,170	9,646	41,460	61,275	—	105,550
Hunter	2,039	400	2,439	—	—	—	—	—	2,439
Illawarra	1,931	1,303	3,234	—	—	—	—	—	3,234
Richmond Tweed	1,409	420	1,829	2,095	—	—	2,095	—	3,924
Mid-North Coast	1,205	1,222	2,427	1,121	—	—	1,121	—	3,548
Northern	800	—	800	—	—	—	—	—	800
North Western	598	—	598	—	—	—	—	—	598
Central West	680	—	680	—	—	—	—	—	680
South Eastern	790	239	1,029	450	—	—	450	—	1,479
Murrumbidgee	85	—	85	949	—	—	949	—	1,034
Murray	385	—	385	280	—	—	280	—	665
Far West	—	—	—	—	—	—	—	—	—
New South Wales	31,972	25,808	57,780	15,065	9,646	41,460	66,171	—	123,951

NEW OTHER RESIDENTIAL DWELLING UNITS COMMENCED, NSW

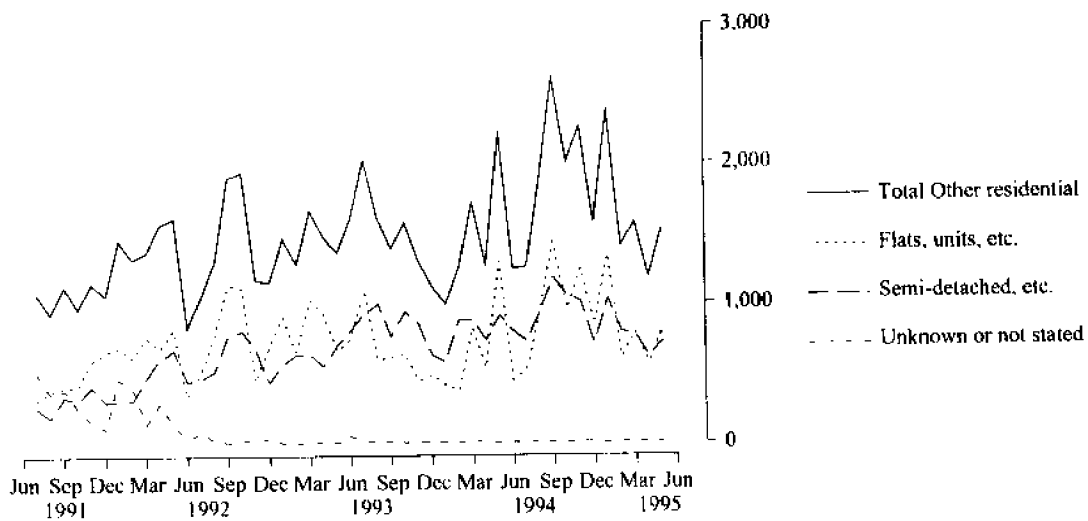


TABLE 6. DWELLING UNITS COMMENCED BY TYPE OF RESIDENTIAL BUILDING IN STATISTICAL LOCAL AREAS
(Number of dwelling units)

Statistical area	Houses												Other residential buildings					Total					
	1995												1994						1995				
	Dec.	Jan.	Feb.	Mar.	Apr.	May	Dec.	Jan.	Feb.	Mar.	Apr.	May	Dec.	Jan.	Feb.	Mar.	Apr.		May				
SYDNEY STATISTICAL DIVISION																							
Botany (A)	—	—	5	5	3	—	—	—	—	—	—	—	—	—	—	—	—	—	—				
Leichhardt (A)	1	4	6	2	4	3	—	9	2	28	—	—	—	—	—	—	—	—	—				
Marrickville (A)	—	—	—	—	—	—	—	—	—	—	—	—	—	—	—	—	—	—	—				
South Sydney (C)	1	2	2	1	—	2	337	121	71	145	22	91	338	123	73	146	22	93	—				
Sydney (C) Inner and Remainder	—	—	—	—	—	—	—	—	—	—	—	—	—	—	—	—	—	—	—				
Inner Sydney SSD	2	6	13	8	7	5	346	123	99	148	98	91	348	129	112	156	105	96	—				
Randwick (A)	6	3	6	7	8	7	49	294	15	48	7	57	55	297	21	55	15	64	—				
Waverley (A)	3	2	4	1	1	1	3	—	11	4	2	—	6	2	15	4	3	1	—				
Woolahra (A)	2	—	—	1	2	3	—	—	—	—	5	6	2	—	—	1	7	9	—				
Eastern Suburbs SSD	11	5	10	8	11	11	52	294	26	52	14	63	63	299	36	60	25	74	—				
Hurstville (C)	6	11	7	6	9	13	14	44	39	36	53	3	20	55	46	52	62	16	—				
Kogarah (A)	16	14	9	5	21	13	10	33	6	34	14	7	26	47	15	39	35	20	—				
Rockdale (A)	3	7	11	9	4	—	—	8	31	13	43	10	3	15	42	22	54	14	—				
Sutherland Shire (A)	57	51	61	50	40	42	174	99	32	88	89	46	231	150	93	138	129	88	—				
St George—Sutherland SSD	82	83	88	80	81	72	198	184	108	171	199	66	280	267	196	251	280	138	—				
Bankstown (C)	34	30	38	19	24	39	50	90	93	23	65	131	84	120	131	42	89	170	—				
Canterbury (A)	8	19	16	7	6	6	8	46	8	9	27	—	16	65	24	16	33	6	—				
Canterbury Bankstown SSD	42	49	54	26	30	45	58	136	101	32	92	131	100	185	155	58	122	176	—				
Fairfield (C)	45	34	19	7	18	40	29	57	12	10	37	34	74	91	31	17	55	74	—				
Liverpool (C)	113	162	172	186	108	74	56	26	32	34	23	96	169	188	204	220	131	170	—				
Fairfield Liverpool SSD	158	196	191	193	126	114	85	83	44	44	60	130	243	279	235	237	186	244	—				
Camden (A)	59	57	116	41	52	48	5	—	2	—	2	8	64	57	118	41	54	56	—				
Campbelltown (C)	32	29	29	63	25	21	13	10	4	30	14	9	45	39	33	93	39	30	—				
Wollondilly (A)	25	19	26	15	22	25	—	2	2	4	2	—	25	21	28	19	24	25	—				
Outer South Western Sydney SSD	116	105	171	119	99	94	18	12	8	34	18	17	134	117	179	153	117	111	—				
Ashfield (A)	—	—	1	—	1	1	—	—	—	—	2	—	—	—	1	—	3	1	—				
Burwood (A)	2	2	1	—	1	2	—	26	37	13	—	—	2	28	38	13	1	2	—				
Concord (A)	—	—	—	—	6	5	—	—	—	—	36	8	—	—	—	—	42	13	—				
Drummoynes (A)	—	2	—	1	1	2	2	—	—	—	—	—	—	2	—	1	1	2	—				
Strathfield (A)	4	2	4	1	4	3	—	—	—	—	—	—	4	2	4	1	4	3	—				
Inner Western Sydney SSD	6	6	6	2	13	13	2	26	37	13	38	8	8	32	43	15	51	21	—				

TABLE 6. DWELLING UNITS COMMENCED BY TYPE OF RESIDENTIAL BUILDING IN STATISTICAL LOCAL AREAS—continued
(Number of dwelling units)

Statistical area	Houses												Other residential buildings					Total							
	1994			1995			1994			1995			1994						1995						
	Dec.	Jan.	Feb.	Mar.	Apr.	May	Dec.	Jan.	Feb.	Mar.	Apr.	May	Dec.	Jan.	Feb.	Mar.	Apr.		May	Dec.	Jan.	Feb.	Mar.	Apr.	May
SYDNEY STATISTICAL DIVISION—continued																									
Auburn (A)	4	8	4	2	—	2	15	52	6	8	24	18	19	60	10	10	24	20							
Holroyd (A)	6	8	5	5	—	10	15	13	34	2	—	2	21	21	39	7	—	12							
Parramatta (C)	11	17	10	11	12	31	112	104	113	77	18	98	123	121	123	88	30	129							
<i>Central</i>																									
<i>Western Sydney SSD</i>	21	33	19	18	12	43	142	169	153	87	42	118	163	202	172	105	54	161							
Blue Mountains (C)	7	27	39	38	73	79	4	19	2	21	8	6	11	46	41	59	81	85							
Hawkesbury (C)	24	15	20	34	34	26	—	5	2	2	—	19	24	20	36	34	34	45							
Perrich (C)	61	131	160	112	53	50	4	8	14	32	24	4	65	139	174	144	77	54							
<i>Outer Western Sydney SSD</i>	92	173	219	184	160	155	8	32	18	55	32	29	100	205	237	239	192	184							
Baulkham Hills (A)	25	28	47	59	94	45	6	2	28	85	22	36	31	30	75	144	116	81							
Blacktown (C)	188	225	122	135	124	82	85	150	12	32	24	24	273	375	134	167	148	106							
<i>Blacktown—</i>																									
<i>Baulkham Hills SSD</i>	213	253	169	194	218	127	91	152	40	117	46	60	304	405	209	311	264	187							
Hunter's Hill (A)	6	4	—	—	4	6	—	2	—	—	—	—	6	6	—	—	4	6							
Lane Cove (A)	5	—	—	6	1	2	—	—	—	4	8	—	5	—	—	—	9	2							
Mosman (A)	4	4	—	—	—	3	—	—	—	—	—	10	4	4	—	—	—	13							
North Sydney (A)	4	2	1	4	1	3	—	161	—	—	11	102	4	163	1	4	12	105							
Ryde (C)	15	14	9	10	13	6	20	16	23	22	21	228	35	30	32	32	34	234							
Willoughby (C)	10	5	7	13	5	14	6	16	8	73	8	20	16	21	15	86	13	34							
<i>Lower Northern Sydney SSD</i>	44	29	17	33	24	34	26	195	31	99	48	360	70	224	48	132	72	394							
Hornsby (A)	25	58	60	37	39	93	10	22	54	194	8	67	35	80	114	231	47	160							
Ku-ring-gai (A)	11	4	8	14	15	8	12	5	10	—	6	2	23	9	18	14	21	10							
<i>Hornsby—Ku-ring-gai SSD</i>	36	62	68	51	54	101	22	27	64	194	14	69	58	89	132	245	68	170							
Manly (A)	—	4	7	6	6	6	—	6	17	11	98	2	—	10	24	17	104	2							
Pittwater (A)	6	5	12	8	10	4	—	—	23	—	12	2	6	5	35	8	22	6							
Warringah (A)	18	17	21	16	20	15	40	4	21	86	30	30	58	21	42	102	50	45							
<i>Northern Beaches SSD</i>	24	26	40	30	36	19	40	10	61	97	140	34	64	36	101	127	176	54							
Gosford (C)	190	83	87	118	89	102	103	54	124	70	41	54	293	137	211	188	130	156							
Wyong (A)	35	102	103	76	52	59	—	32	32	13	34	28	35	134	135	89	86	87							
<i>Gosford—Wyong SSD</i>	225	185	190	194	141	161	103	86	156	83	75	82	328	271	346	277	216	243							
SYDNEY SD	1,072	1,211	1,255	1,140	1,012	994	1,191	1,529	946	1,226	916	1,258	2,263	2,740	2,201	2,366	1,928	2,352							

TABLE 6. DWELLING UNITS COMMENCED BY TYPE OF RESIDENTIAL BUILDING IN STATISTICAL LOCAL AREAS—continued
(Number of dwelling units)

Statistical area	Houses												Other residential buildings					Total			
	1994					1995					1994					1995					
	Dec.	Jan.	Feb.	Mar.	Apr.	May	Dec.	Jan.	Feb.	Mar.	Apr.	May	Dec.	Jan.	Feb.	Mar.	Apr.		May		
HUNTER STATISTICAL DIVISION																					
Cessnock (C)	44	80	20	24	5	5	7	13	—	—	—	—	—	—	—	—	—	—	—		
Lake Macquarie (C)	52	129	130	65	33	53	10	51	72	32	20	7	62	180	202	97	53	60	29		
Maitland (C)	28	33	39	35	15	27	2	24	7	6	6	2	30	57	46	41	21	29	—		
Newcastle (C) - Inner and Remainder	53	62	64	57	18	31	41	147	56	40	10	10	94	209	120	97	28	41	—		
Port Stephens (A)	41	38	47	26	40	41	21	119	11	13	8	6	62	157	58	39	48	47	—		
Newcastle SSD	218	342	300	207	111	157	81	354	146	91	44	25	299	696	446	298	155	182	—		
Dungog (A)	7	5	4	4	3	6	—	—	—	—	2	—	7	5	4	4	5	6	—		
Gloucester (A)	1	1	—	3	4	—	—	—	—	—	—	—	1	1	—	3	4	—	—		
Great Lakes (A)	36	32	22	28	21	15	20	8	12	18	3	10	56	40	34	46	24	25	—		
Merrima (A)	1	—	—	—	—	2	—	—	—	—	—	—	—	—	—	—	—	—	—		
Murrumbidgee (A)	—	—	—	—	—	—	—	—	—	—	—	—	—	—	—	—	—	—	—		
Muswellbrook (A)	9	10	7	4	7	6	2	6	2	—	2	—	11	16	9	4	9	6	—		
Scotney (A)	11	5	5	8	6	6	4	—	—	2	—	—	15	5	5	10	6	6	—		
Singleton (A)	7	5	20	16	11	9	—	4	8	13	—	—	7	9	28	29	11	9	—		
Hunter SD Balance SSD	72	58	58	63	52	44	26	18	22	33	7	10	98	76	80	96	59	54	—		
HUNTER SD	290	400	358	270	163	201	107	372	168	124	51	35	397	772	526	394	214	236	—		
ILLAWARRA STATISTICAL DIVISION																					
Kiama (A)	8	3	13	6	8	8	4	—	2	6	4	2	12	3	15	12	12	10	—		
Shellharbour (A)	27	35	35	25	20	19	11	8	2	4	2	6	38	43	37	29	22	25	—		
Wollongong (C)	62	34	57	111	44	46	91	93	24	52	20	30	153	127	81	163	64	76	—		
Wollongong SSD	97	72	105	142	72	73	106	101	28	62	26	38	203	173	133	204	98	111	—		
Shoalhaven (C)	108	143	108	121	62	32	10	41	4	16	18	—	118	184	112	137	80	32	—		
Wingecarribee (A)	49	45	20	26	4	30	12	4	4	—	4	4	61	49	24	26	4	34	—		
Illawarra SD Balance SSD	157	188	128	147	66	62	22	45	8	16	18	4	179	233	136	163	84	66	—		
ILLAWARRA SD	254	260	233	289	138	135	128	146	36	78	44	42	382	406	269	367	182	177	—		

TABLE 6. DWELLING UNITS COMMENCED BY TYPE OF RESIDENTIAL BUILDING IN STATISTICAL LOCAL AREAS -continued
(Number of dwelling units)

Statistical area	Other residential buildings												Total					
	Houses						Other residential buildings											
	1994		1995		1994		1995		1994		1995							
Dec.	Jan.	Feb.	Mar.	Apr.	May	Dec.	Jan.	Feb.	Mar.	Apr.	May	Dec.	Jan.	Feb.	Mar.	Apr.	May	
RICHMOND-TWEED STATISTICAL DIVISION																		
Tweed (A) Pt A	6	29	44	31	16	16	—	46	17	6	6	99	28	6	75	61	37	44
Tweed Heads SSD	6	29	44	31	16	16	—	46	17	6	6	99	28	6	75	61	37	44
Ballina (A)	24	28	25	12	21	29	16	6	7	8	6	6	9	40	34	32	20	38
Byron (A)	13	26	15	22	13	13	18	3	3	2	4	4	5	31	29	18	24	18
Casino (A)	2	1	2	2	1	6	—	—	2	—	3	3	—	5	1	4	2	6
Kyogle (A)	5	6	4	5	3	2	—	5	—	—	—	—	—	5	11	4	5	2
Lismore (C)	23	48	53	51	54	23	2	14	6	25	8	8	2	25	62	59	76	25
Richmond River (A)	5	12	6	3	3	5	—	2	2	3	—	—	—	5	14	8	6	5
Tweed (A) Pt B	1	17	19	13	12	20	—	32	8	—	2	2	18	1	49	27	13	38
Richmond-Tweed SD Balance SSD	73	138	124	108	107	98	36	62	28	38	23	34	109	152	200	146	183	132
RICHMOND-TWEED SD	79	167	168	139	123	114	36	108	45	44	122	62	115	275	213	183	245	176
MID-NORTH COAST STATISTICAL DIVISION																		
Bellingen (A)	9	8	6	15	6	13	—	2	—	—	—	—	8	9	10	6	15	21
Coffs Harbour (C)	37	31	20	25	26	26	24	23	16	4	6	6	26	61	54	36	29	52
Copmanhurst (A)	2	3	—	—	1	3	—	—	—	—	—	—	—	2	3	—	—	3
Grafton (C)	4	3	1	—	6	9	2	—	—	—	2	4	—	6	3	1	—	8
Maclean (A)	5	31	19	14	6	29	—	10	16	12	—	8	8	5	41	35	26	37
Nambucca (A)	20	11	3	1	8	9	—	4	—	—	—	2	—	20	15	3	1	11
Nymboida (A)	2	2	1	2	6	7	—	—	—	—	—	—	—	2	2	1	2	7
Ullmarra (A)	—	5	6	4	—	6	—	2	—	—	—	—	—	—	7	6	4	6
Clarence SSD	79	94	56	61	59	102	26	41	32	16	8	8	48	105	135	88	77	150
Greater Taree (C)	19	16	24	33	9	15	4	4	32	9	2	2	4	23	20	56	42	19
Hastings (A)	34	60	16	28	24	54	9	13	—	3	—	—	—	43	73	16	31	54
Kempsey (A)	15	11	19	7	6	30	—	—	8	—	—	—	—	15	11	27	7	30
Hastings SSD	68	87	59	68	39	99	13	17	40	12	2	2	4	81	104	99	80	103
MID-NORTH COAST SD	147	181	115	129	98	201	39	58	72	28	10	52	186	239	187	157	108	253

TABLE 6. DWELLING UNITS COMMENCED BY TYPE OF RESIDENTIAL BUILDING IN STATISTICAL LOCAL AREAS—continued
(Number of dwelling units)

Statistical area	Houses												Other residential buildings					Total										
	1995												1994						1995									
	Dec.	Jan.	Feb.	Mar.	Apr.	May	Jun.	Jul.	Aug.	Sep.	Oct.	Nov.	Dec.	Jan.	Feb.	Mar.	Apr.		May	Jun.	Jul.	Aug.	Sep.	Dec.	Jan.	Feb.	Mar.	Apr.
Barraba (A)	—	—	—	—	—	—	—	—	—	—	—	—	—	—	—	—	—	—	—	—	—	—	—	—	—	—	—	—
Bingara (A)	—	1	—	—	—	—	—	—	—	—	—	—	—	—	—	—	—	—	—	—	—	—	—	—	—	—	—	—
Gunnedah (A)	3	1	—	—	—	2	—	—	—	—	—	—	—	—	—	—	—	—	—	—	—	—	—	—	—	—	—	—
Inverell (A) Pt A	1	1	—	—	—	2	—	—	—	—	—	—	—	—	—	—	—	—	—	—	—	—	—	—	—	—	—	—
Manilla (A)	3	—	—	—	—	—	—	—	—	—	—	—	—	—	—	—	—	—	—	—	—	—	—	—	—	—	—	—
Nundle (A)	—	—	—	—	—	—	—	—	—	—	—	—	—	—	—	—	—	—	—	—	—	—	—	—	—	—	—	—
Parry (A)	3	4	7	1	4	3	—	—	—	—	—	—	—	—	—	—	—	—	—	—	—	—	—	—	—	—	—	—
Quirindi (A)	2	1	—	—	—	2	—	—	—	—	—	—	—	—	—	—	—	—	—	—	—	—	—	—	—	—	—	—
Tamworth (C)	8	12	6	5	1	—	—	—	—	—	—	—	—	—	—	—	—	—	—	—	—	—	—	—	—	—	—	—
Yallaroi (A)	—	—	—	4	1	—	—	—	—	—	—	—	—	—	—	—	—	—	—	—	—	—	—	—	—	—	—	—
<i>Northern Slopes SSD</i>	20	20	15	17	8	9	12	2	4	4	4	4	4	4	4	4	4	4	4	4	4	4	4	4	4	4	4	19
Armidale (C)	8	9	9	5	4	9	6	—	—	—	—	—	—	—	—	—	—	—	—	—	—	—	—	—	—	—	—	9
Dumaresq (A)	1	2	5	2	1	3	—	—	—	—	—	—	—	—	—	—	—	—	—	—	—	—	—	—	—	—	—	3
Glen Innes (A)	2	2	—	3	2	5	—	—	—	—	—	—	—	—	—	—	—	—	—	—	—	—	—	—	—	—	—	5
Guyra (A)	2	—	—	—	—	—	—	—	—	—	—	—	—	—	—	—	—	—	—	—	—	—	—	—	—	—	—	1
Inverell (A) Pt B	4	1	2	3	4	3	—	—	—	—	—	—	—	—	—	—	—	—	—	—	—	—	—	—	—	—	—	3
Severn (A)	2	2	2	1	1	—	—	—	—	—	—	—	—	—	—	—	—	—	—	—	—	—	—	—	—	—	—	1
Tenterfield (A)	2	2	4	3	2	5	—	—	—	—	—	—	—	—	—	—	—	—	—	—	—	—	—	—	—	—	—	3
Uralla (A)	4	5	3	—	1	—	—	—	—	—	—	—	—	—	—	—	—	—	—	—	—	—	—	—	—	—	—	5
Walcha (A)	1	—	—	—	—	—	—	—	—	—	—	—	—	—	—	—	—	—	—	—	—	—	—	—	—	—	—	—
<i>Northern Tablelands SSD</i>	26	21	26	18	16	27	6	6	6	6	6	6	6	6	6	6	6	6	6	6	6	6	6	6	6	6	6	27
Moree Plains (A)	1	1	—	—	7	2	—	—	—	—	—	—	—	—	—	—	—	—	—	—	—	—	—	—	—	—	—	2
Narrabri (A)	2	2	1	4	2	3	—	—	—	—	—	—	—	—	—	—	—	—	—	—	—	—	—	—	—	—	—	3
<i>North Central Plains SSD</i>	3	3	1	4	9	5	—	—	—	—	—	—	—	—	—	—	—	—	—	—	—	—	—	—	—	—	—	5
NORTHERN SD	49	44	42	39	33	41	18	2	4	7	4	4	4	4	4	4	4	4	4	4	4	4	4	4	4	4	4	51

NORTHERN STATISTICAL DIVISION

TABLE 6. DWELLING UNITS COMMENCED BY TYPE OF RESIDENTIAL BUILDING IN STATISTICAL LOCAL AREAS—continued
(Number of dwelling units)

Statistical area	Houses												Other residential buildings												Total	
	1994			1995			1994			1995			1994			1995			1994		1995					
	Dec.	Jan.	Feb.	Mar.	Apr.	May	Dec.	Jan.	Feb.	Mar.	Apr.	May	Dec.	Jan.	Feb.	Mar.	Apr.	May	Jan.	Feb.	Mar.	Apr.	May			
NORTH WESTERN STATISTICAL DIVISION																										
Coolah (A)	—	2	1	1	1	3	—	—	—	—	—	—	—	—	—	—	—	—	2	1	1	1	3			
Coonabarabran (A)	1	3	4	2	1	1	—	—	—	—	—	—	—	—	—	—	—	—	3	4	2	1	1			
Dubbo (C)	21	37	30	30	5	37	14	14	21	2	5	8	35	51	51	32	10	45	51	51	32	10	45			
Gilgandra (A)	—	1	1	2	1	1	—	—	—	—	—	—	—	—	—	—	—	—	1	1	2	—	1			
Mudgee (A)	11	4	4	6	5	7	—	—	8	—	—	—	11	4	12	6	5	7	4	12	6	5	7			
Narramine (A)	6	2	9	2	2	4	—	—	—	—	—	—	6	2	9	2	4	4	2	9	2	4	4			
Wellington (A)	4	—	1	1	1	—	—	—	—	—	—	—	4	—	1	1	—	—	—	1	1	1	—			
Central Macquarie SSD	43	49	50	44	15	53	16	14	29	2	7	8	59	63	79	46	22	61	63	79	46	22	61			
Bogan (A)	—	—	1	—	1	1	—	—	—	—	—	—	—	—	—	—	—	—	—	1	—	—	1			
Coonamble (A)	—	—	—	—	—	1	—	—	—	—	—	—	—	—	—	—	—	—	—	—	—	—	—			
Walgett (A)	—	3	—	—	4	2	—	4	2	—	—	—	—	7	2	—	4	2	7	2	—	4	2			
Warren (A)	1	—	—	2	—	—	—	—	—	—	—	—	—	—	—	—	—	—	—	—	—	—	—			
Macquarie-Barwon SSD	1	3	1	2	5	4	—	4	2	—	4	—	1	7	3	2	9	4	7	3	2	9	4			
Bourke (A)	—	2	—	1	—	1	—	—	—	—	—	—	—	2	—	—	—	—	2	—	—	—	1			
Brewarrina (A)	—	—	—	—	—	7	—	—	—	—	—	—	—	—	—	—	—	—	—	—	—	—	7			
Cobar (A)	5	5	6	1	2	1	—	—	—	—	—	—	5	5	6	1	2	1	5	6	1	2	1			
Upper Darling SSD	5	7	6	2	2	9	—	—	—	—	—	—	5	7	6	2	2	9	7	6	2	2	9			
NORTH WESTERN SD	49	59	57	48	22	66	16	18	31	2	11	8	65	77	88	50	33	74	77	88	50	33	74			

TABLE 6. DWELLING UNITS COMMENCED BY TYPE OF RESIDENTIAL BUILDING IN STATISTICAL LOCAL AREAS continued
(Number of dwelling units)

Statistical area	Houses												Total				
	1994						1995										
	Dec.	Jan.	Feb.	Mar.	Apr.	May	Dec.	Jan.	Feb.	Mar.	Apr.	May					
	15	23	20	16	2	28	10	28	6	2	6	25	51	26	18	2	34
Queanbeyan (C) Queanbeyan SSD	15	23	20	16	2	28	10	28	6	2	6	25	51	26	18	2	34
Boorowa (A)	—	—	1	3	1	2	—	—	—	—	—	—	—	1	3	1	2
Crookwell (A)	1	1	1	1	5	1	—	—	—	—	—	1	1	1	1	5	1
Goulburn (C)	8	5	8	2	10	6	—	—	—	—	—	8	5	8	2	10	6
Gunning (A)	1	1	3	1	3	—	—	—	—	—	—	1	1	3	1	3	—
Harden (A)	6	5	1	2	—	4	—	—	—	—	—	6	5	1	2	—	4
Mulwaree (A)	7	1	10	14	9	8	—	—	—	—	—	7	1	10	14	9	8
Tallaganda (A)	1	—	5	—	—	1	—	—	—	—	—	1	—	5	—	—	1
Yarrowlumla (A)	8	7	10	5	4	6	—	—	—	—	—	8	7	10	5	4	6
Yass (A)	—	30	25	31	10	5	—	—	—	2	16	—	30	27	47	10	5
Young (A)	5	4	5	5	5	4	—	—	—	4	2	5	4	9	7	5	4
Southern Tablelands (excl. Queanbeyan) SSD	37	54	69	64	47	37	—	—	6	18	—	37	54	75	82	47	37
Bega Valley (A)	7	29	21	29	20	16	—	4	7	2	8	7	33	28	31	20	24
Eurobodalla (A)	23	36	25	27	12	23	2	34	17	2	6	25	70	42	29	24	29
Lower South Coast SSD	30	65	46	56	32	39	2	38	24	4	14	32	103	70	60	44	53
Bombala (A)	—	2	3	—	1	—	—	—	—	—	—	—	—	3	—	1	—
Cooma-Monaro (A)	5	9	3	2	4	3	—	4	—	—	—	5	13	3	2	4	3
Snowy River (A)	5	6	4	1	8	2	2	—	2	4	—	7	6	6	5	8	2
Snowy SSD	10	17	10	3	13	5	2	4	2	4	—	12	21	12	7	13	5
SOUTH EASTERN SD	92	159	145	139	94	109	14	70	38	28	12	106	229	183	167	106	129

TABLE 6. DWELLING UNITS COMMENCED BY TYPE OF RESIDENTIAL BUILDING IN STATISTICAL LOCAL AREAS—continued
(Number of dwelling units)

Statistical area	Total																	
	Houses						Other residential buildings											
	1994		1993		1994		1995		1994		1995							
Dec.	Jan.	Feb.	Mar.	Apr.	May	Dec.	Jan.	Feb.	Mar.	Apr.	May	Dec.	Jan.	Feb.	Mar.	Apr.	May	
MURRAY STATISTICAL DIVISION																		
Albury (C)	23	27	27	26	21	22	6	5	4	6	—	2	29	32	31	32	21	24
Hume (A)	6	2	1	11	7	10	—	—	—	—	—	—	6	2	1	11	7	10
Albury SSD	29	29	28	37	28	32	6	5	4	6	—	2	35	34	32	43	28	34
Corowa (A)	2	8	5	2	1	4	3	—	—	—	3	—	5	8	5	2	4	4
Culcairn (A)	1	4	1	1	—	—	—	—	—	—	—	—	1	4	1	1	—	—
Holbrook (A)	1	1	1	—	2	2	—	—	—	—	—	—	—	1	1	—	2	2
Tumbarumba (A)	1	1	1	1	3	—	—	—	—	—	—	—	1	1	1	1	3	—
Urana (A)	—	1	—	—	—	1	—	—	—	—	—	—	—	1	—	—	—	1
Upper Murray (excl. Albury SSD)	4	15	8	4	6	7	3	—	—	—	3	—	7	15	8	4	9	7
Berrigan (A)	8	4	—	—	4	—	5	—	—	—	4	—	13	4	—	—	8	—
Comargo (A)	—	—	—	—	—	—	—	—	—	—	—	—	—	—	—	—	—	—
Deniliquin (A)	2	1	4	1	5	9	—	—	—	—	—	—	2	1	4	1	5	9
Jerilderie (A)	2	—	—	—	—	—	—	—	—	—	—	—	2	—	—	—	—	—
Murray (A)	2	2	8	—	5	7	—	3	—	2	3	—	2	5	8	2	8	7
Wakool (A)	—	1	—	1	2	—	—	—	—	—	—	8	—	1	—	1	2	8
Windouran (A)	—	—	—	—	—	—	—	—	—	—	—	—	—	—	—	—	—	—
Central Murray SSD	14	8	12	3	16	16	5	3	—	2	7	8	19	11	12	5	23	24
Balranald (A)	—	1	—	—	2	1	—	—	—	—	—	—	—	1	—	—	2	1
Wentworth (A)	4	4	5	—	—	4	—	—	—	—	—	—	4	4	5	—	—	4
Murray Darling SSD	4	5	5	—	2	5	—	—	—	—	—	—	4	5	5	—	2	5
MURRAY SD	51	57	53	44	52	60	14	8	4	8	10	10	65	65	57	52	62	70
FAR WEST STATISTICAL DIVISION																		
Broken Hill (C)	2	3	4	1	1	1	—	—	—	—	—	—	2	3	4	1	1	1
Central Darling (A)	—	—	—	—	—	2	—	—	—	—	—	—	—	—	—	—	—	2
Unincorp. Far West	—	—	—	—	—	—	—	—	—	—	—	—	—	—	—	—	—	—
FAR WEST SD	2	3	4	1	1	3	—	—	—	—	—	—	2	3	4	1	1	3
NEW SOUTH WALES																		
NEW SOUTH WALES	2,215	2,757	2,633	2,349	1,829	2,048	1,581	2,377	1,410	1,572	1,186	1,527	3,796	5,134	4,043	3,921	3,015	3,575

EXPLANATORY NOTES

Introduction

This publication contains monthly details of the number of new dwelling units reported by approving authorities as having commenced.

2. As from November 1990 the data have been compiled using an 'as reported' method. Previously, data were revised for up to five months as councils notified the ABS of commencements occurring before the reference month. A comparison of data compiled using the two methods showed that, while the actual numbers may vary (both on the high and the low side), the trends were very similar. It is not possible for all the previous data to be compiled under the new method, nor can future data be compiled under the old method. Therefore there is a break in series. The advantages of the new method are that there are generally no revised data and that NSW data are more comparable with similar series issued by other States. However, if there are significant reporting delays, previous monthly data will be revised.

Scope and coverage

3. The statistics were compiled from the monthly reports, provided by local and other government authorities, of commencements of new houses and new other residential buildings for which:

- (a) building permits were issued by local government authorities in areas subject to building control by those authorities;
- (b) contracts were let or day labour work was authorised by Commonwealth, State, semi-government or local government authorities; and
- (c) are valued at \$10,000 or more.

4. The number of dwelling units created by alterations and additions to existing buildings, and through the construction of new 'non-residential buildings' (i.e. buildings other than residential buildings) is not included.

Definitions

5. A *dwelling unit* is defined as a self-contained suite of rooms, including cooking and bathing facilities and intended for long-term residential use. Units (whether self-contained or not) within buildings offering institutional care (such as hospitals) or temporary accommodation (such as motels, hostels and holiday apartments) are not defined as dwelling units.

6. A *residential building* is defined as a building predominantly consisting of one or more dwelling units. Dwellings can be either houses or other residential buildings as follows:

- (a) a *house* is defined as a detached building predominantly used for long-term residential purposes and consisting of only one dwelling unit. Thus detached 'granny flats' and detached dwelling units

(such as caretakers' residences) associated with other buildings are defined as houses for the purpose of these statistics;

- (b) an *other residential building* is defined as a building which is predominantly used for long-term residential purposes and which contains (or has attached to it) more than one dwelling unit (e.g. a block of townhouses, a duplex, or an apartment building).

7. *Commencement*. For the purpose of this statistical series, a job is regarded as being commenced on the date when it is reported that:

- (a) the job is first inspected by a local government or other government authority building inspector or surveyor, whether the work is passed or not. In general, the first inspection is undertaken at the foundations or footings stage of construction; or
- (b) the job is determined as commenced by a building inspector or surveyor.

8. *Ownership*. The ownership of a residential building is classified at the time of approval as either 'private sector' or 'public sector' according to the expected ownership of the completed building.

9. Values data are derived by aggregation of the estimated completed value of building work as reported on approval documents. These estimates exclude value of land and landscaping but include site preparation. For houses, these estimates are usually a reliable indicator of the completed value of the building. However, for other residential buildings and non-residential buildings these estimates can and often do differ significantly from the completed value of the building.

10. From July 1992, an expanded functional classification of buildings based on the Dwelling Structure Classification (DSC) has been introduced by the ABS to provide more detailed information on residential building approvals.

11. The DSC has been developed by the ABS to provide a standard classification of the different types of dwelling structures (houses, flats, townhouses, etc.). The DSC will be implemented across all major collections of housing data in the ABS. The DSC has the same overall scope as the classification used in previous collections but provides more detail than previously available to reflect the current interest in medium to high density housing.

12. In particular, for Building Approvals and Dwelling Commencements, the DSC allows new other residential building to be classified as follows:

- (a) Semi-detached, row or terrace houses, townhouses, etc. (dwellings having their own private grounds and no other dwellings above or below) with:
 - (i) one storey; or

- (ii) two or more storeys.
- (b) Flats, units or apartments, etc. (dwellings not having their own private grounds and usually sharing a common entrance, foyer or stairwell) in a building of:

- (i) one or two storeys;
- (ii) three storeys; or
- (iii) four or more storeys.

13. More details on the DSC are contained in the ABS Information Paper, *Dwelling Structure Classification* (DSC) (1296.0).

Statistical areas of New South Wales

14. This contains data presented according to the Australian Standard Geographical Classification (ASGC) and incorporating changes brought about by the (State) *Local Government Act 1993* to the titles of legal Local Government Areas (LGAs). Under this classification, statistical areas are defined as follows:

- (a) *Statistical Local Areas (SLAs)*. These geographical areas are in most cases either identical with, or have been aggregated to, the previously published whole or part of legal Local Government Areas (LGAs) as defined under the (State) *Local Government Act 1919* and comprising cities (C), municipalities (M) and shires (S). In other cases, they are identical to each previously published unincorporated area. The (State) *Local Government Act 1993* eliminated the titles of Shire and Municipality and instituted the concept of *Area (A)*. With one exception — Sutherland (S) became Sutherland Shire (A) — names of the LGAs have remained unaltered. In aggregate, SLAs cover the whole of the State without gaps or overlaps. In some cases legal LGAs overlap Statistical Subdivision boundaries and therefore comprise two SLAs (Part A and Part B) or three SLAs in the case of Cabonne (A) (Part A, Part B and Part C).
- (b) *Statistical Subdivisions (SSDs)*. These consist of one or more SLAs and form the intermediate size spatial unit for the presentation of regional data.
- (c) *Statistical Divisions (SDs)*. These consist of one or more Statistical Subdivisions (SSDs). Where SSDs are not shown for statistical purposes, statistical local areas are shown ordered alphabetically within statistical divisions. The divisions are designed to be relatively homogeneous regions characterised by identifiable social and economic units within the region, under the unifying influence of one or more major towns or cities.
- (d) *Statistical Districts*. To provide comparable statistics over a period of time, statistical districts have been defined around selected urban centres, with a population of 25,000 or more, experiencing urban

growth beyond the legal local government area boundaries. Those districts are intended to contain the anticipated urban spread over the next 20 years. In some cases, Statistical District boundaries are identical to those of particular Statistical Subdivisions (e.g. Newcastle SSD and Wollongong SSD included in Table 5 of this publication).

15. Further information concerning statistical areas is contained in the publication *Regional Statistics, New South Wales*, 1989 issue (1304.1) and in the publication *Australian Standard Geographical Classification* (1216.0).

General

16. For purposes of comparison over time, it should be noted that statistics of dwelling commencements are affected from month to month by large projects (such as blocks of flats) commenced in particular months, and also by the administrative arrangements of government authorities.

Comparability of statistics

17. Because of the difference in data sources, collection methodologies and timing of notification of commencements, care should be exercised in comparing quarterly data derived from monthly dwelling unit commencements statistics with the quarterly dwelling unit commencements statistics from the Building Activity Survey — published in *Building Activity, New South Wales* (8752.1).

18. Users may also wish to refer to the following building and construction publications which are available on request.

NEW SOUTH WALES

Building Approvals, New South Wales (monthly) (8731.1)

Building Activity, New South Wales (quarterly) (8752.1)

AUSTRALIA

Housing Finance for Owner Occupation, Australia (monthly) (5609.0)

Price Index of Materials Used in House Building, Six State Capital Cities and Canberra (monthly) (6408.0)

Building Approvals, Australia (monthly) (8731.0)

Building Activity, Australia (quarterly) (8752.0)

Engineering Construction Survey, Australia (quarterly) (8762.0)

Symbols and other usages

A	Area
C	City
r	figure or series revised since previous issue
SD	Statistical Division
SLA	Statistical Local Area
SSD	Statistical Subdivision
..	not applicable
—	nil or rounded to zero (including null cells)

19. Where figures have been rounded, discrepancies may occur between sums of the component items and totals.



For more information ...

The ABS publishes a wide range of statistics and other information on Australia's economic and social conditions. Details of what is available in various publications and other products can be found in the *ABS Catalogue of Publications and Products* available at all ABS Offices (see below for contact details).

Information Consultancy Service

Information tailored to special needs of clients can be obtained from the Information Consultancy Service available at ABS Offices (see Information Inquiries below for contact details).

National Dial-a-Statistic Line

0055 86 400

(Steadycom P/L: premium rate 25c/21.4 secs.)

This number gives you 24 hour access, 365 days a year for a range of statistics.

Electronic Data Services

A large range of data is available via on-line services, diskette, magnetic tape, tape cartridge and CD ROM. For more details about these electronic data services, contact any ABS Office (see below).

Bookshops and Subscriptions

There is a large number of ABS publications available from ABS bookshops (see below Bookshop Sales for contact details). The ABS also provides a subscription service through which nominated publications are supplied by mail on a regular basis (telephone Subscription Service toll free on 008 02 0608 Australia wide).

Sales and Inquiries

Regional Offices	Information Inquiries	Bookshop Sales
SYDNEY (02)	268 4611	268 4620
MELBOURNE (03)	9615 7000	9615 7829
BRISBANE (07)	3222 6351	3222 6350
PERTH (09)	360 5140	360 5307
ADELAIDE (08)	237 7100	237 7582
HOBART (002)	205 800	205 800
CANBERRA (06)	207 0326	207 0326
DARWIN (089)	432 111	432 111
National Office		
ACT (06)	252 6007	008 020 608

ABS Email Addresses

Keylink	STAT.INFO/ABS
X.400	(C:AU,A:TELMEMO,O:ABS,SN:INFO,FN:STAT)
Internet	STAT.INFO@ABS.TELEMEMO.AU



Information Services, ABS, GPO Box 796, Sydney NSW 2001
or any ABS office

